

# Grey District Council Speed Limits Bylaw

**This bylaw was adopted by the Grey District Council on 21 June 2005 and amended on 14 June 2010, 13 August 2018, 13 July 2020, and 22 February 2021 following consideration of submissions received as part of the Special Consultative procedure**

# CONTENTS

		<b>Page No.</b>
<b>1.0</b>	<b>AUTHORITY</b>	<b>4</b>
<b>2.0</b>	<b>OBJECTIVE</b>	<b>4</b>
<b>3.0</b>	<b>TITLE AND COMMENCEMENT</b>	<b>4</b>
<b>4.0</b>	<b>DEFINITIONS</b>	<b>4</b>
<b>5.0</b>	<b>SPEED LIMITS</b>	<b>4</b>
<b>6.0</b>	<b>SCHEDULES</b>	<b>4</b>
<b>7.0</b>	<b>ATTACHMENTS TO THIS BYLAW</b>	<b>5</b>
<b>APPENDIX A:</b>	<b>SCHEDULES</b>	
<b>A.1</b>	<b>Schedule 1: Roads subject to a speed limit of 10 km/h</b>	<b>6</b>
<b>A.2</b>	<b>Schedule 2: Roads subject to a speed limit of 20 km/h</b>	<b>6</b>
<b>A.3</b>	<b>Schedule 3: Roads subject to a speed limit of 30 km/h</b>	<b>6</b>
<b>A.4</b>	<b>Schedule 4: Roads subject to a speed limit of 40 km/h</b>	<b>6</b>
<b>A.5</b>	<b>Schedule 5: Roads subject to a speed limit of 50 km/h</b>	<b>7</b>
<b>A.6</b>	<b>Schedule 6: Roads subject to a speed limit of 60 km/h</b>	<b>7</b>
<b>A.7</b>	<b>Schedule 7: Roads subject to a speed limit of 70 km/h</b>	<b>7</b>
<b>A.8</b>	<b>Schedule 8: Roads subject to a speed limit of 80 km/h</b>	<b>8</b>
<b>A.9</b>	<b>Schedule 9: Roads subject to a speed limit of 100 km/h</b>	<b>8</b>
<b>A.10</b>	<b>Schedule 10: Roads with a seasonal speed limit</b>	<b>8</b>
<b>APPENDIX B:</b>	<b>MAPS</b>	
<b>B.1</b>	<b>MAP 1: Ahaura 50 km/hr speed zone</b>	<b>9</b>
<b>B.2</b>	<b>MAP 2: Blackball 50 km/hr speed zone</b>	<b>10</b>
<b>B.3</b>	<b>MAP 3: Dobson and Taylorville 50 km/hr speed zone</b>	<b>11</b>
<b>B.4</b>	<b>MAP 4: Rutherglen, Gladstone and Camerons speed zones</b>	<b>12</b>
<b>B.5</b>	<b>MAP 5: Greymouth 50 km/hr speed zone</b>	<b>13</b>
<b>B.6</b>	<b>MAP 6: Kaiata 50 km/hr speed zone</b>	<b>14</b>
<b>B.7</b>	<b>MAP 7: Runanga 50 km/hr speed zone</b>	<b>15</b>
<b>B.8</b>	<b>MAP 8: Paroa speed zones</b>	<b>16</b>
<b>B.9</b>	<b>MAP 9: Stillwater 70 km/hr speed zone</b>	<b>17</b>

<b>B.10</b>	<b>MAP 10: Moana 50 km/hr speed zone</b>	<b>18</b>
<b>B.11</b>	<b>MAP 11: Greymouth CBD 30 km/hr speed zone</b>	<b>19</b>
<b>B.12</b>	<b>MAP 12: Nelson Creek 60 km/hr speed zone</b>	<b>20</b>
<b>B.13</b>	<b>MAP 13: Nelson Creek seasonal 30 km/hr speed zone</b>	<b>21</b>
<b>B.14</b>	<b>MAP14: Barrytown 60 km/hr speed zone</b>	<b>22</b>
<b>B.15</b>	<b>MAP 15: Moana seasonal 30 km/hr speed zone</b>	<b>23</b>
<b>B.16</b>	<b>MAP 16: Te Kinga 40 km/hr speed zone</b>	<b>25</b>

# GREY DISTRICT COUNCIL SPEED LIMITS BYLAW

## 1.0 AUTHORITY

In pursuance of the powers vested in it by Section 145(b) of the Local Government Act 2002 and the Land Transport Rule: Setting of Speed Limits 2017 [54001], the Grey District Council makes this bylaw to set the speed limits as specified in the schedules.

## 2.0 OBJECTIVE

To contribute to a safe and efficient road network by imposing reasonable, appropriate and enforceable speed limits.

## 3.0 TITLE AND COMMENCEMENT

3.1 This Bylaw may be cited as the Grey District Speed Limits Bylaw.

3.2 This Bylaw shall come into force on 1 July 2005 and any subsequent amendment or review, on the date of its confirmation by Council.

3.3 The speed limits described in the schedules come into force on the dates specified in the schedules or on 1 July 2005.

## 4.0 DEFINITIONS

**Road** has the same meaning as in Land Transport Rule: Setting of Speed Limits 2017 [54001].

**Speed Limit** has the same meaning as in Land Transport Rule: Setting of Speed Limits 2017 [54001].

## 5.0 SPEED LIMITS

The roads or areas described in the schedules specified in clause 6.0 or as indicated on the maps referenced in the schedules, are declared to be subject to the speed limit specified in the schedules, which are part of this bylaw.

Where maps are used to designate speed zones or traffic management areas, it shall be noted that within these zones or areas, specific roads as listed in the schedules may have **lower** speed limits. Where this is the case, the lower speed limit for the specific road or section of road shall take precedence and shall be deemed to be the enforceable speed limit.

Additionally, any speed limits shown on the maps do not apply to the State Highways, where Waka Kotahi NZ Transport Agency is the road controlling authority.

## 6.0 SCHEDULES

Schedule 1: Roads subject to a speed limit of 10 km/h

Schedule 2: Roads subject to a speed limit of 20 km/h

Schedule 3: Roads subject to a speed limit of 30 km/h

Schedule 4: Roads subject to a speed limit of 40 km/h

Schedule 5: Roads subject to a speed limit of 50 km/h

Schedule 6: Roads subject to a speed limit of 60 km/h

Schedule 7: Roads subject to a speed limit of 70 km/h

Schedule 8: Roads subject to a speed limit of 80 km/h

Schedule 9: Roads subject to a speed limit of 100 km/h

Schedule 10: Roads with a seasonal speed limit

## **7.0 ATTACHMENTS TO THIS BYLAW**

The following Grey District Council maps form part of this bylaw:

<b>MAP No.</b>	<b>AREA</b>	<b>ISSUE DATE</b>
1	Ahaura	27 April 2005
2	Blackball	27 April 2005
3	Dobson/Taylorville	27 April 2005
4	Gladstone/Cameron's	27 April 2005
5	Greymouth/Cobden/Karoro/Blaketown	27 April 2005
6	Kaiata	13 July 2020
7	Runanga/Dunollie	27 April 2005
8	South Beach/Paroa/Rutherglen	27 April 2005
9	Stillwater	27 April 2005
10	Moana	13 July 2020
11	Greymouth CBD	13 July 2020
12	Nelson Creek	13 July 2020
13	Nelson Creek (Seasonal Speed Zones)	13 July 2020
14	Barrytown	13 July 2020
15	Moana (Seasonal Speed Zones)	13 July 2020
16	Te Kinga	22 Feb 2020

## APPENDIX A: SCHEDULES

### A.1 SCHEDULE 1: ROADS SUBJECT TO A SPEED LIMIT OF 10KM/H

1. Legal Instrument: Grey District Council Speed Limits Bylaw
2. Declaration: The roads listed in Schedule 1 are declared to be subject to a speed limit of 10 km/h and shall become enforceable once all traffic control devices are installed in accordance with **Land Transport Rule: Traffic Control Devices 2004**.

Road Name	From	To
Tainui Street	Mawhera Quay	Mackay Street

### A.2 SCHEDULE 2: ROADS SUBJECT TO A SPEED LIMIT OF 20KM/H

Currently no roads scheduled.

### A.3 SCHEDULE 3: ROADS SUBJECT TO A SPEED LIMIT OF 30 KM/H

1. Legal Instrument: Grey District Council Speed Limits Bylaw
2. Declaration: The roads listed in Schedule 3 are declared to be subject to a speed limit of 30 km/h and shall become enforceable once all traffic control devices are installed in accordance with **Land Transport Rule: Traffic Control Devices 2004**.

Town	Grey District Council Map Reference	Date Speed Limit Comes into Force (Legal Instrument)
Greymouth Central Business District	Map 11	13 July 2020

### A.4 SCHEDULE 4: ROADS SUBJECT TO A SPEED LIMIT OF 40 KM/H

1. Legal Instrument: Grey District Council Speed Limits Bylaw
2. Declaration: The roads listed in Schedule 4 are declared to be subject to a speed limit of 40 km/h and shall become enforceable once all traffic control devices are installed in accordance with **Land Transport Rule: Traffic Control Devices 2004**.

Town	Grey District Council Map Reference	Date Speed Limit Comes into Force (Legal Instrument)
Te Kinga	Map 16	22 February 2020

### A.5 SCHEDULE 5: ROADS SUBJECT TO A SPEED LIMIT OF 50 KM/H

1. Legal Instrument: Grey District Council Speed Limits Bylaw
2. Previous Legal Instruments: Notice in the New Zealand Gazette listed below
3. Declaration: The roads marked on the Grey District Council maps listed below by the symbol allocated in the respective drawing to 50km/h are

declared to be subject to a speed limit of 50 km/h with effect from 00:01 hours on the dates listed.

<b>Town</b>	<b>Grey District Council Map Reference</b>	<b>Date Speed Limit Comes into Force (Legal Instrument)</b>	<b>New Zealand Gazette Notice Reference or Other Authority (Previous Legal Instrument)</b>
<b>Ahaura</b>	Map 1	1 July 2005	14 April 1976, No 40, page 821
<b>Blackball</b>	Map 2	1 July 2005	10 July 1986, No 106, page 2913
<b>Dobson</b>	Map 3	July 2005	4 November 1971, No 82, page 2297
<b>Gladstone</b>	Map 4	1 July 2005	13 April 2000, No 39, page 871
<b>Greymouth, Karoro, South Beach, Cobden, Boddytown, Blaketown</b>	Map 5	1 July 2005	6 September 1990, No 154, page 3283
<b>Kaiata</b>	Map 6	1 July 2005	6 September 1990, No 154, page 3283 and 29 November 1990, No 209, page 4507
<b>Moana</b>	Map 10	1 July 2005	17 July 1986, No 109, page 3005
<b>Stillwater, Arnold Valley Road</b>	Map 9	1 July 2005	4 November 1971, No 82, page 2297.
<b>Taylorville</b>	Map 3	1 July 2005	18 October 1990 No.182, page 3921
<b>Paroa, South Beach, Gladstone</b>	Map 8	1 July 2005	6 September 1990, No 154, page 3283
<b>Runanga</b>	Map 7	1 July 2005	Approved 3 April 2003, Plan No LT0364/1

**A.6 SCHEDULE 6: ROADS SUBJECT TO A SPEED LIMIT OF 60 KM/H**

Town	Grey District Council Map Reference	Date Speed Limit Comes into Force (Legal Instrument)
Barrytown	Map 14	13 July 2020
Nelson Creek	Map 12	13 July 2020

**A.7 SCHEDULE 7: ROADS SUBJECT TO A SPEED LIMIT OF 70 KM/H**

1. Legal Instrument: Grey District Council Speed Limits Bylaw
2. Previous Legal Instruments: Notice in the New Zealand Gazette listed below
3. Declaration: The roads marked on the Grey District Council maps listed below by the symbol allocated in the respective map to 70 km/h are declared to be subject to a speed limit of 70 km/h with effect from 00:01 hours on the dates listed.

Town	Grey District Council Map Reference	Date Speed Limit Comes into Force (Legal Instrument)	New Zealand Gazette Notice Reference (Previous Legal Instrument)
Stillwater	Map 9	1 July 2005	22 September 1938, Vol iii, page 3000
Rutherglen	Map 8	1 July 2005	6 September 1990, No 154, page 3283

**A.8 SCHEDULE 8: ROADS SUBJECT TO A SPEED LIMIT OF 80 KM/H**

Currently no roads scheduled.

**A.9 SCHEDULE 9: ROADS SUBJECT TO A SPEED LIMIT OF 100 KM/H**

1. Legal Instrument: Land Transport Rule: Setting of Speed Limits 2017, Section 2.2
2. Previous Legal Instruments: Transport Act 1962
3. Declaration: All roads not designated at a lower speed limit as per the preceding schedules shall be declared 100km/h as per the Land Transport Rule with effect from 00:01 hours on 1 July 2005.

**A.10 SCHEDULE 10: ROADS WITH A SEASONAL SPEED LIMIT**

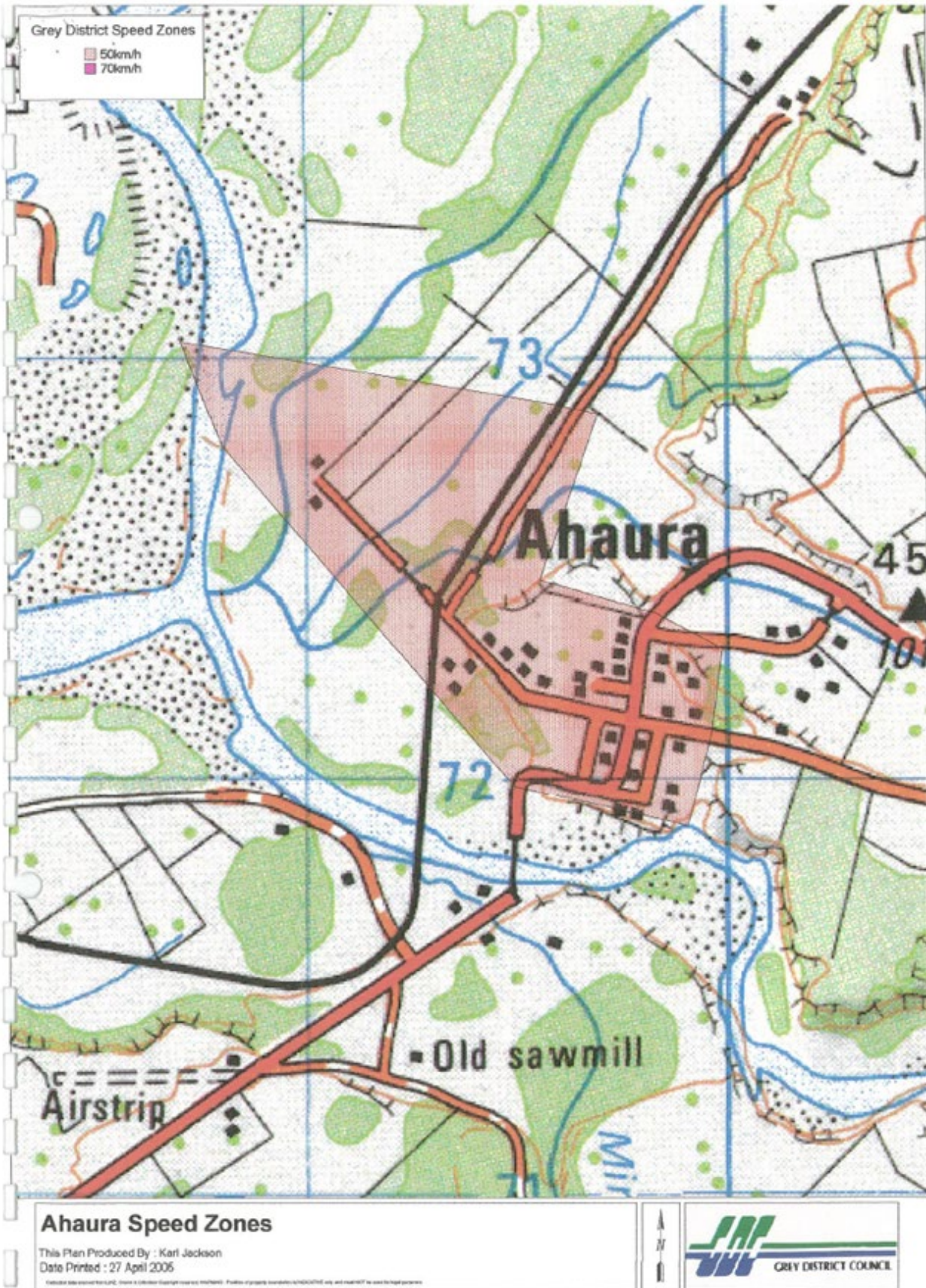
1. Legal Instrument: Grey District Council Speed Limits Bylaw
2. Previous Legal Instrument: None
3. Declaration: The roads marked on the Grey District Council maps listed below by the symbol allocated in the respective drawing to 30km/h are declared to be subject to a speed limit of 30 km/h with effect on the dates listed. The roads listed in Schedule 10 are declared to be subject to a speed limit of 30 km/h.
4. Time Period: Each year from 1 December to 30 April in the following year.



<b>Town</b>	<b>Grey District Council Map Reference</b>	<b>Date Speed Limit Comes into Force (Legal Instrument)</b>
<b>Nelson Creek</b>	Map 13	13 July 2020
<b>Moana</b>	Map 15	13 July 2020

## APPENDIX B: MAPS

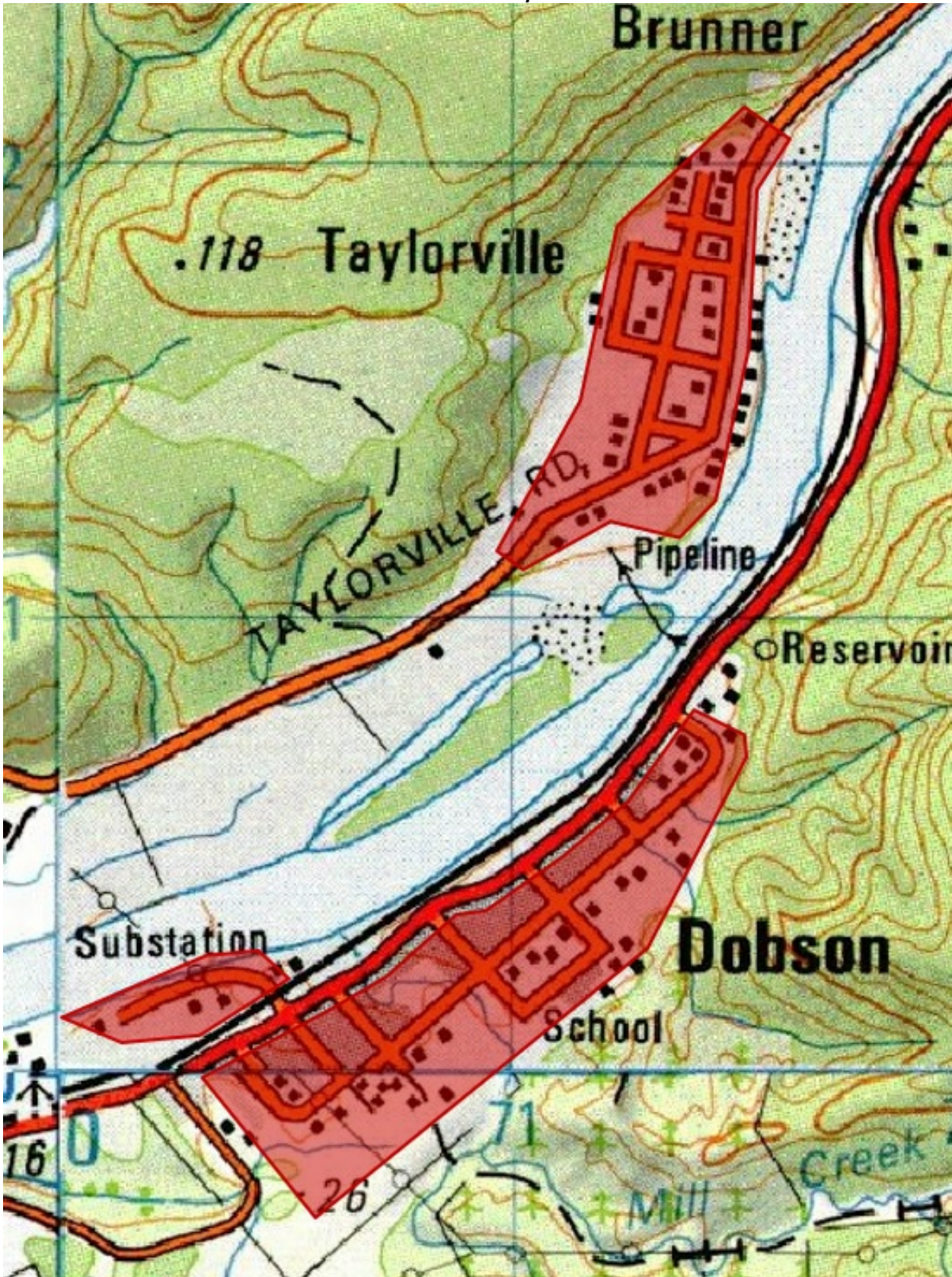
### B.1 MAP 1: AHAURA 50 KM/HR SPEED ZONE



**B.2 MAP 2: BLACKBALL 50 KM/HR SPEED ZONE**



**B.3 MAP 3: DOBSON AND TAYLORVILLE 50KM/H SPEED ZONE**



**B.4 MAP 4: RUTHERGLEN, GLADSTONE AND CAMERONS SPEED ZONES**



**B.5 MAP 5: GREYMOUTH 50 KM/HR SPEED ZONE**

**Greymouth Speed Zones**

Created By: Mel Sutherland  
 Print Date: 8/05/2018  
 Print Time: 11:53 AM

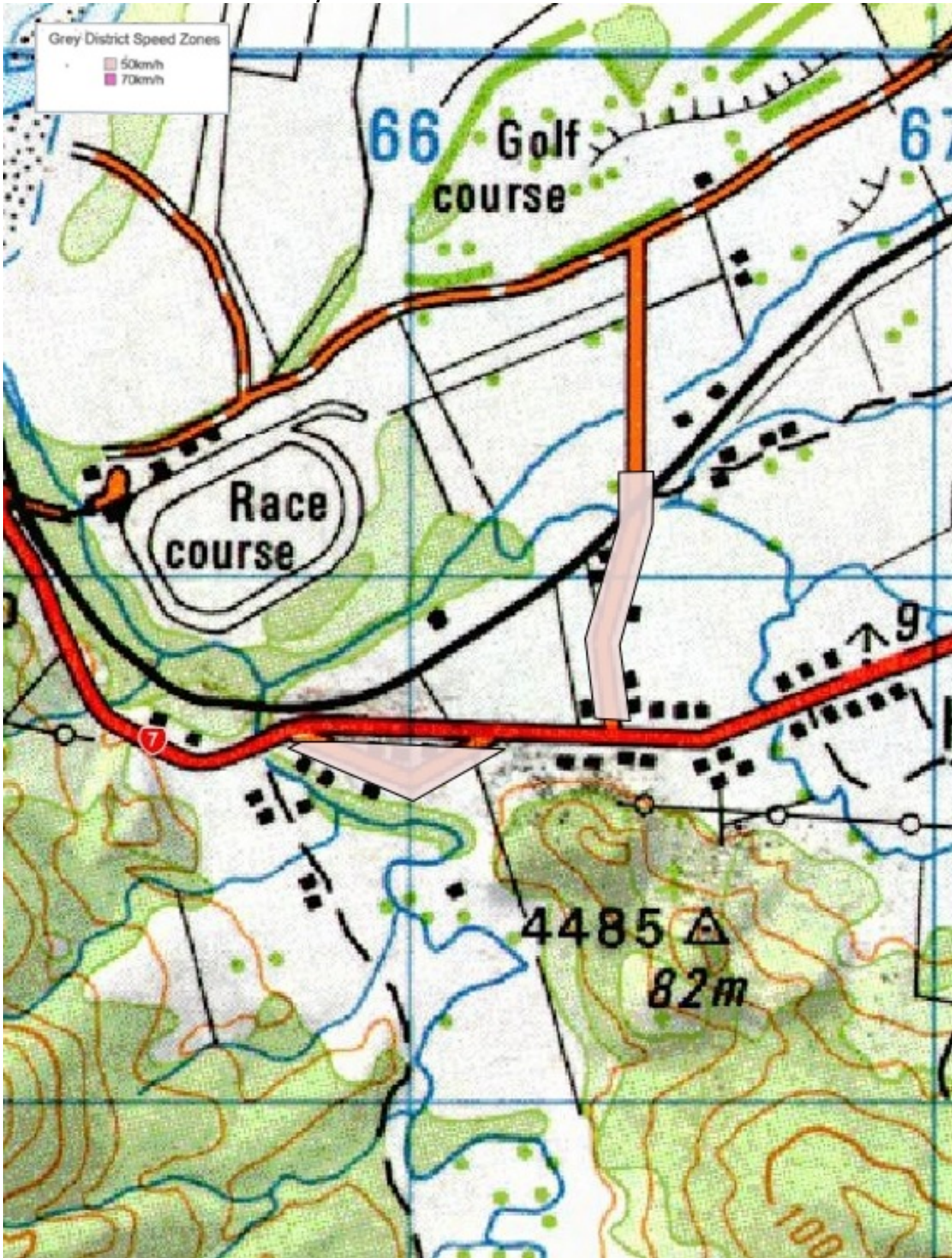


Scale: 1:30000  
 Original Sheet Size A4

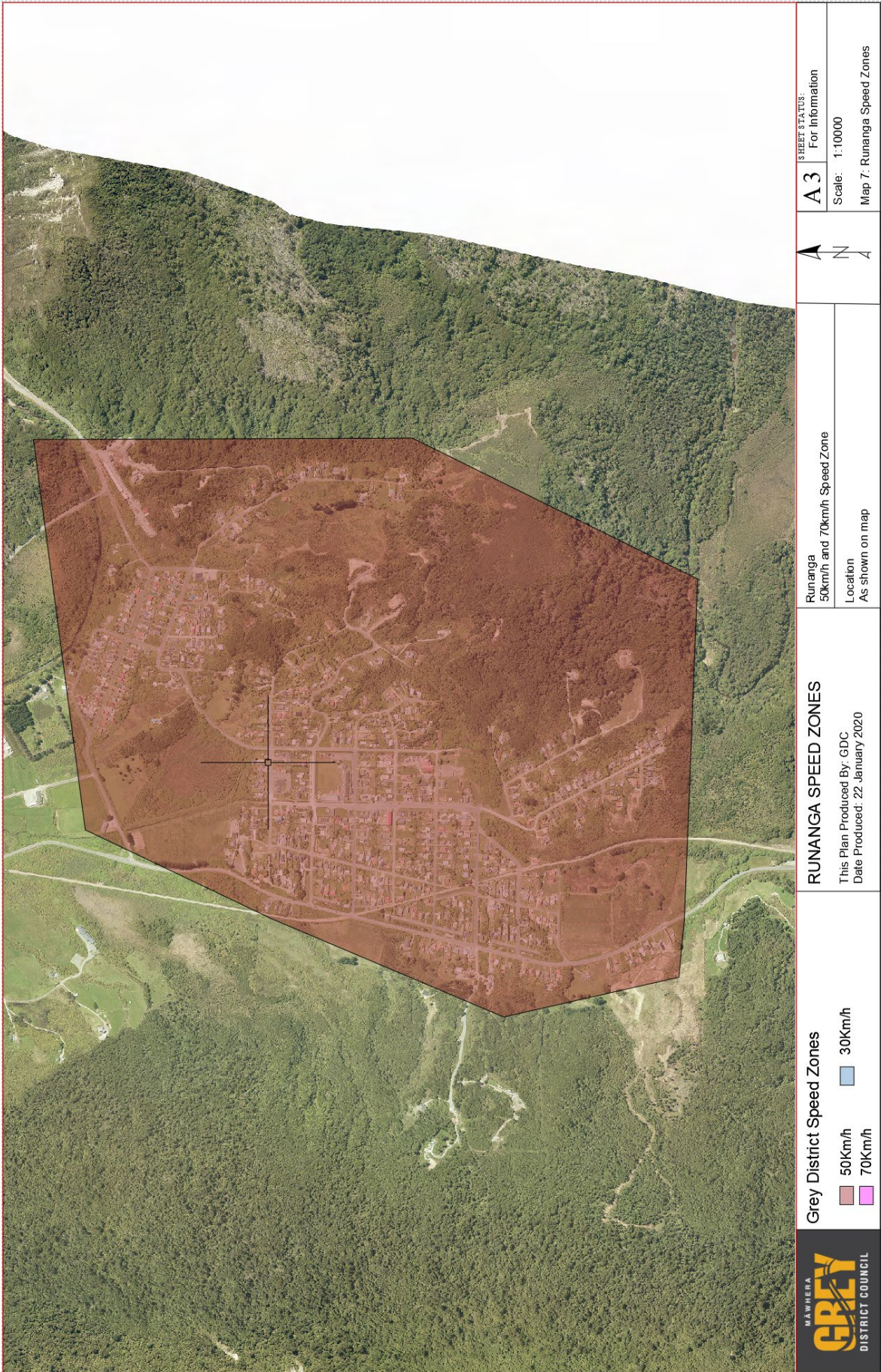
Projection: NZGD2000 / New Zealand Transverse Mercator 2000  
 Bounds: 1449437.28192128, 5295078.19498121  
 1453812.19800232, 5300517.11068139

Sourced from LINZ data. Crown Copyright reserved. Not to be reproduced without permission of GreyDC.  
 The information shown on this plan may not be accurate and is indicative only.  
 The Grey District Council accepts no responsibility for incomplete or inaccurate information.

**B.6 MAP 6: KAIATA 50 KM/HR SPEED ZONE**



**B.7 MAP 7: RUNANGA 50 KM/HR SPEED ZONE**



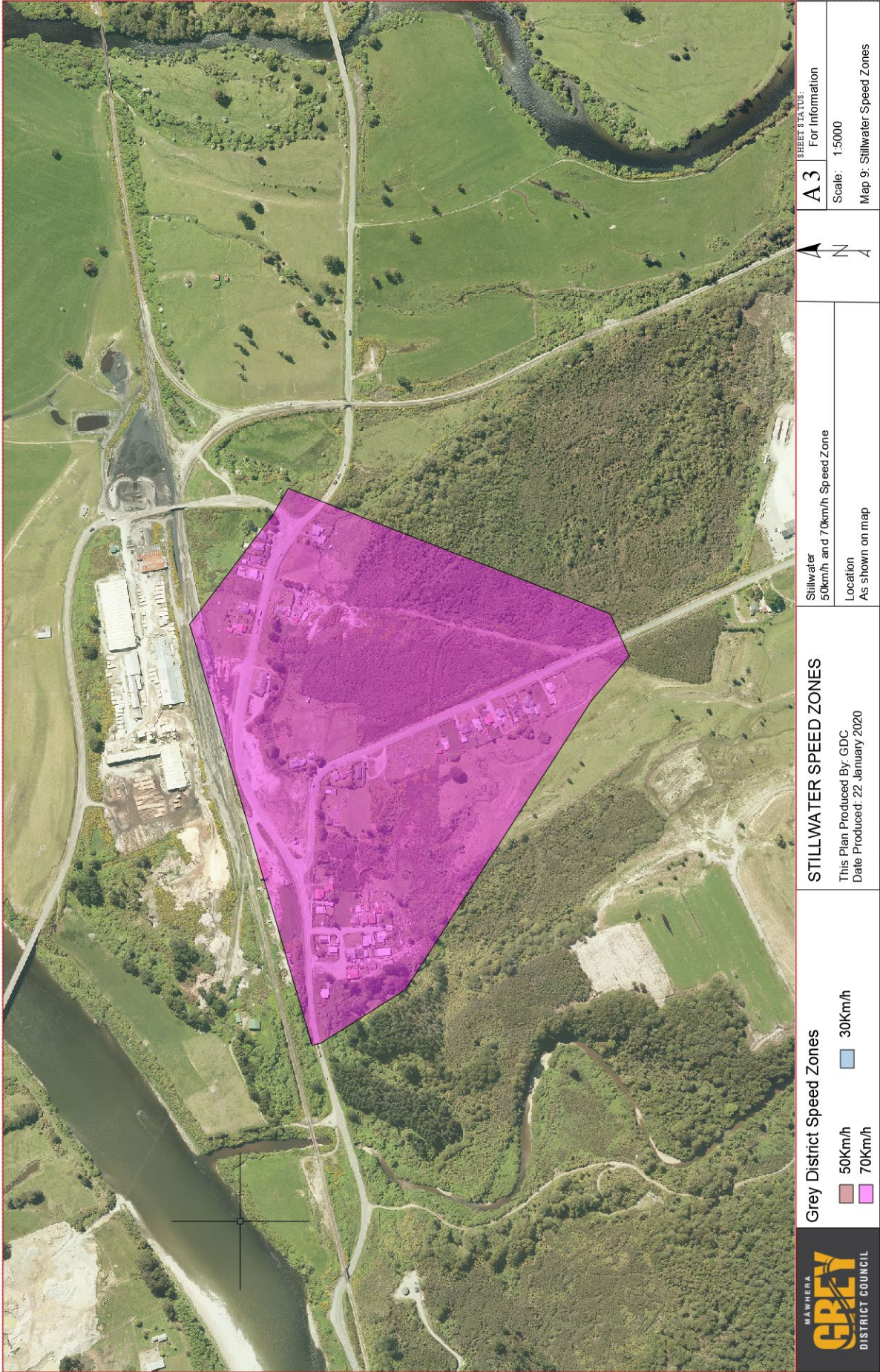
**o.**



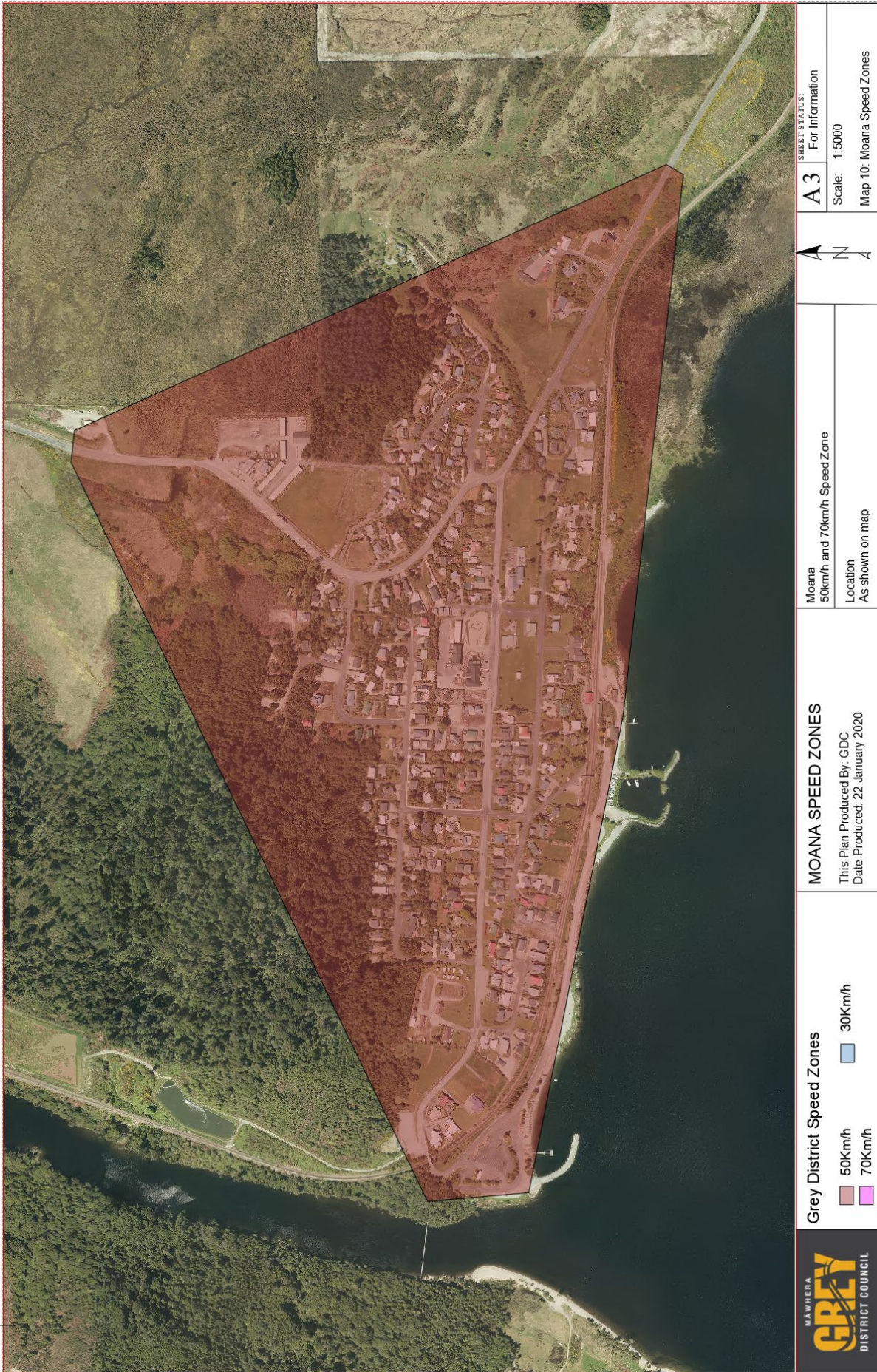
**B.8 MAP 8: PAROA SPEED ZONES**



**B.9 MAP 9: STILLWATER 70 KM/HR SPEED ZONE**



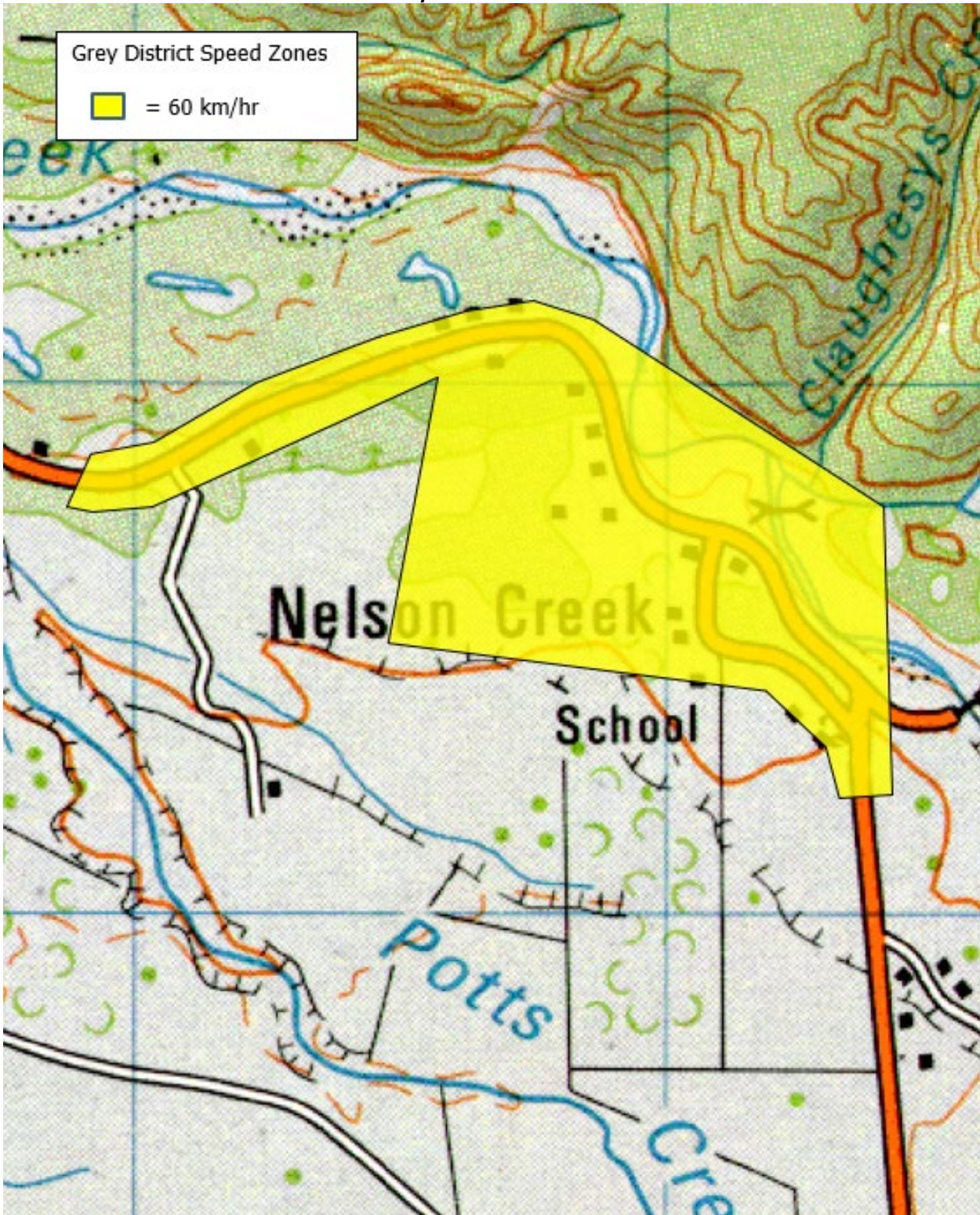
**B.10 MAP 10: MOANA 50 KM/HR SPEED ZONE**



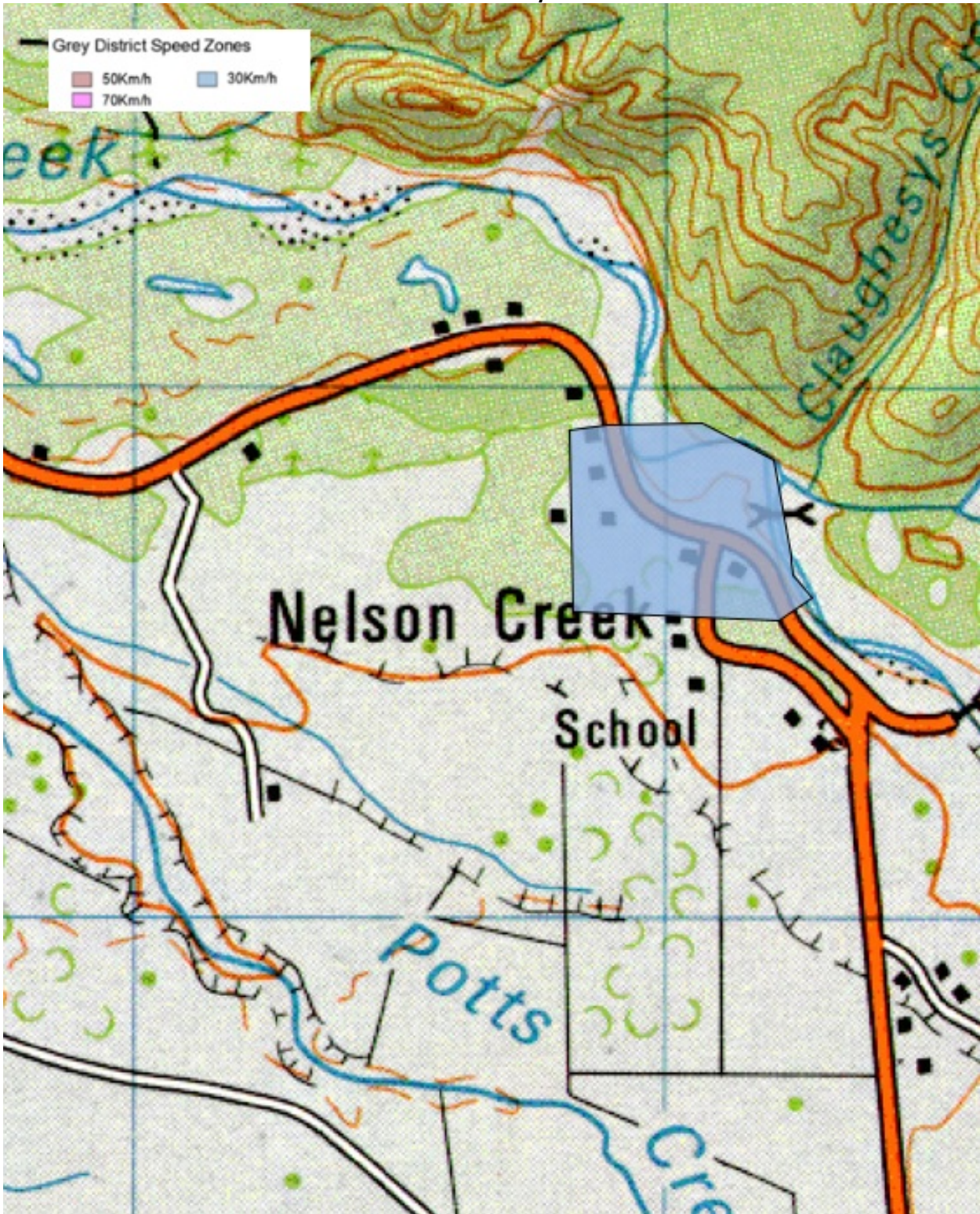
**B.11 MAP 11: GREYMOUTH CBD 30 KM/HR SPEED ZONE**



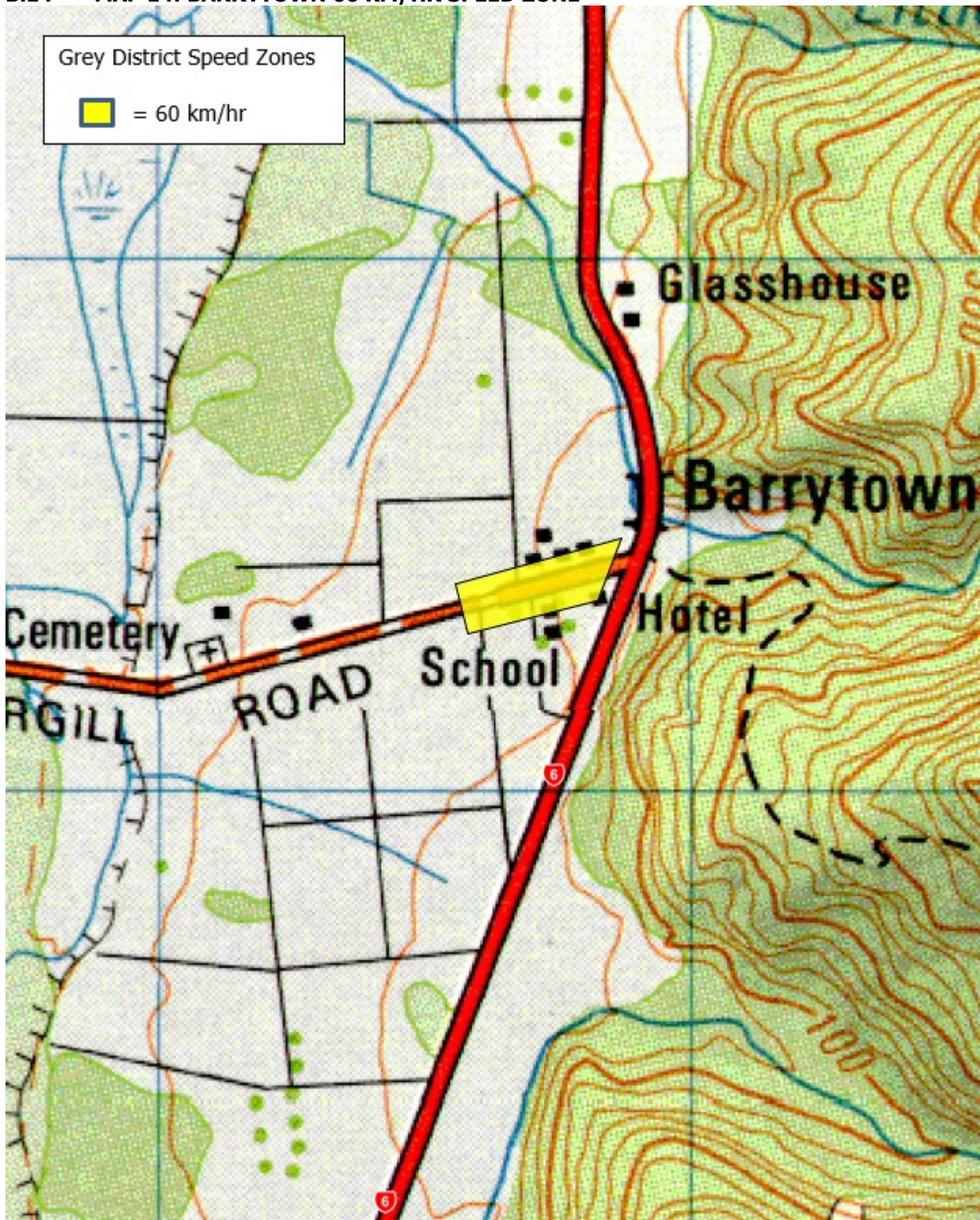
**B.12 MAP 12: NELSON CREEK 60 KM/HR SPEED ZONE**



**B.13 MAP 13: NELSON CREEK SEASONAL 30 KM/HR SPEED ZONE**



**B.14 MAP 14: BARRYTOWN 60 KM/HR SPEED ZONE**



**B.15 MAP 15: MOANA SEASONAL 30 KM/HR SPEED ZONE**





**B.16 MAP 16: TE KINGA 40 KM/H SPEED ZONE**

