



## GET YOUR TOPS OFF Greymouth!

We want Greymouth to get their tops off - tops off your empty bottles that is!

Leaving the lid on your recyclable bottles is causing problems such as:

- Making it harder for the machine to compress the bottles; and
- Often the materials used for bottles and lids are different. Non-recyclable material contaminates our product and makes it poor quality for resale purposes.

**Please do your bit for recycling by...**



**TOP TIP** Look for numbers 1-6 on your plastic - only these items are suitable for recycling.



Removing the lids from empty bottles, rinsing them then popping them into your Yellow Bin.

Only plastic lids labelled 1-6 can go in the Yellow Bin.



All plastic bottle tops NOT labelled 1-6 must go into the Red Bin.

## Mayor's Comment



A huge restructuring of Central Business Districts (CBD's) is happening all over New Zealand. Big box stores, malls, internet retail and supermarket expansion with cheap liquor are changing retailing forever. Add to this the over 500 job losses in the high paying coal industry and many other layoffs in other businesses, making for an extremely tough economic climate.

At present there are only 50 coalmining jobs in the Grey District and unemployment is at 5.8%, so the District is coping well under the circumstances. Mining still has a future but coal will not return to the employment numbers of the past. Gold mining still has good prospects and there are many other minerals that can boost the West Coast Economy.

During the last 15 years we have moved to a more sustainable economy, which is good for our long term future. A great example of the District's move from the extractive to sustainable industry is the new fish factory. Westland Dairy investing in research and product development of milk products and the expansion of Kaiata Park are other good examples.

Greymouth is well placed to be a sports tournament and conference destination. The \$22 million Aquatic Centre and Westland Recreation Centre (currently in construction) will be the catalyst to achieve that goal. Regional sports tournaments have the potential to be huge now that we have the infrastructure in place to host them.

Tourism has great growth potential. That is why Council, working with our community, constructed the cycleway, viewing platform at the Blaketown breakwater and Cobden Aromahana Sanctuary & Recreation Area. As well as these projects, we've invested heavily in recent years in the necessary infrastructure, ie sewerage schemes and water upgrades. We are also planning a 'great walks' addition with the proposed Southern Paparoa Coal Heritage Trails. We need lots of attractions in every nook and cranny to make the District desirable for locals and visitors. The Town Square with free WiFi is just one example of many more projects planned over the next five years to add to the vibrancy of the town.

The Ultra Fast Broadband rollout is completed in Greymouth. Only 33 towns and cities in New Zealand were fortunate enough to be included in the \$1.5 billion broadband spend. We lobbied hard to be included and now this creates huge opportunities for businesses in the District. The new \$70 million hospital

will give confidence to our residents and the Tai Poutini Polytechnic expansion helps consolidate our education system.

There is more retail floor space than ever in Greymouth but it is not just in the traditional CBD. The Warehouse, two big supermarkets and Mitre 10 Mega are outside of the traditional CBD but have well and truly cemented Greymouth as the retail hub of West Coast. As inner CBD shops close, outer CBD retailers will move closer to the inner CBD. The CBD will survive but change is inevitable. Leadership is about finding opportunities when times are tough then taking action; doing nothing is not an option.

At a recent meeting with two Government Ministers, I was assured that the Midland Railway Line to Canterbury is secure into the future. The TranzAlpine is increasing in passenger numbers and this season's forward bookings for tourists are predicting a record.

We are working together to increase economic prospects and employment opportunities through our Community Economic Development Strategy and the Regional Plan. Our goal is employment sustainability and growth. It will not happen overnight but Coasters are resilient. We are moving in the right direction.

**Tony Kokshoorn**

## 2015 TRUSTPOWER AWARDS

Congratulations to the following people/groups who were winners at the recent Grey District TrustPower Community Awards:

<b>Heritage &amp; Environment</b>	<i>Winner:</i> Ogilvie Reserve Management Trust
<b>Health &amp; Well Being</b>	<i>Winner:</i> Victim Support Grey District <i>Runner Up:</i> Greymouth Newcomers' Network <i>Commendation:</i> MS & Parkinsons' West Coast
<b>Arts &amp; Culture</b>	<i>Winner:</i> Greymouth Municipal Band <i>Runner Up:</i> West Coast Society of Art
<b>Sport &amp; Leisure</b>	<i>Winner:</i> Greymouth Skatepark Development Trust <i>Runner Up:</i> Greymouth Athletics Club
<b>Education &amp; Child/ Youth Development</b>	<i>Winner:</i> Paroa Playcentre <i>Runner Up:</i> The Shed <i>Commendation:</i> Friends of Grey Main School
<b>Supreme Winner</b>	Greymouth Blue Light
<b>Youth Spirit</b>	<i>Winner:</i> Eilish Ramsden, John Paul II High School <i>Runner Up:</i> Caitlin Glue, Greymouth High School



Supreme Winners

Our first lot of signage and interpretation are due to go up around the District before Christmas. Keep your eye out!

Construction of the new Westland Recreation Centre is progressing well and is on track to be completed mid-late 2016. We're excited to announce that the new facility will include a gym!

The Spring Creek Swimming Pool in Runanga is open for the summer season each year.

The pool is due to open in December 2015 - please watch our website and Facebook page for details.

 GreymouthAquaticCentre

[www.greycdc.govt.nz/pools](http://www.greycdc.govt.nz/pools)

## WHAT DO THE NEW FOOD SAFETY RULES MEAN FOR YOU?

The new **Food Act 2014** comes into force on 1 March 2016. Do you run a café or restaurant? Maybe you own a dairy? Or sell produce to the supermarket? If your business involves selling or providing food, in any form, then now is the time to find out what new food regulations will mean for you.

The Ministry for Primary Industries (MPI) has developed a great new online tool called 'Where Do I Fit?'. It makes it easy to see how the new Food Act 2014 applies to you.

Existing businesses will be given time to transition to the new rules over a three-year period from 1 March 2016 to 28 February 2019.

For more information, please visit:

[www.mpi.govt.nz/food-safety/food-act-2014/](http://www.mpi.govt.nz/food-safety/food-act-2014/)

## WESTLAND ANNIVERSARY DAY

Westland Anniversary Day always happens on the Monday closest to 1<sup>st</sup> December each year. For 2015, the public holiday will be observed on **Monday 30 November 2015**.

GREYMOUTH - NEW ZEALAND  
**History HOUSE**  
PHOTOGRAPH MUSEUM



EXPERIENCE A PICTORIAL JOURNEY WITH THE RESILIENT WEST COASTERS OF THE GREY DISTRICT

## RATING REVALUATIONS ARE COMING UP

Council uses property valuations to calculate the amount of rates each property pays and these valuations are reviewed every three years. Quotable Value (QV) is contracted by Council to be our valuation service provider (VSP).

The last revaluation was carried out in 2012 which means it is time to do them again.

### Effect of new valuations on rates

It is important to note that an increase or decrease in property value does not automatically mean that there will be an increase or decrease in rates. Grey District Council rate assessments contain different charges that make up the annual levy:

- General Rates (calculated on land value);
- A Uniform Annual General Charge (set charge); and
- Targeted Rates (set charges or calculated on capital value).

Your rateable land value is used to determine how much of the General Rate you pay in comparison to other properties in the District. General Rates are currently used to fund activities such as roading, refuse disposal sites, stormwater, parks, community services, district planning, rural fire, flood protection and much more.

Which area of the District you live in and what the property is used for also determines how much you contribute towards these services (ie residential, rural, commercial use etc).

### Timeline

Work is now underway on the revaluations. Notices of the new valuations will be sent to property owners later this year, who have a right of objection if required. Full details of the objection process will be included with your valuation notice.

**NOTICES POSTED OUT BY QV: 2 December 2015**

**LAST DAY FOR OBJECTIONS: 21 January 2016**

The new valuations will be used for rating purposes from 1 July 2016.



We love our furry four legged friends here in Greymouth but it is important to remember that Council bylaws require dogs to be on leads in certain places and situations. These include:

- The West Coast Wilderness Trail (this is the cycle and walk way that runs from Blaketown to Taramakau); and
- Cobden Aromahana Sanctuary and Recreation Area

Details of all places and situations where dogs are required to be on leads are contained in our Dog Control Bylaw and Access to Walkways and Cycleway Bylaw (available on our website, [www.greycdc.govt.nz/bylaws-policies](http://www.greycdc.govt.nz/bylaws-policies)).

The Dog Control Bylaw also states that you must pick up any 'deposits' left by your dog and responsibly dispose of them. It is possible for fines to be issued to people who breach our bylaws.

We want our public spaces to be enjoyed by everyone; dog lovers, dogs - big and small, children of all sizes and cynophobes (people with a phobia of dogs).

## 2015 CIVIC AWARDS

The following people were awarded Civic Awards in July for their outstanding contributions to the Grey District community:

<b>Jean &amp; Russell Adams</b>	Multiple Sclerosis and Parkinson's West Coast
<b>Mervyn Ashby</b>	Greymouth Aero Club and Community Patrol
<b>Maurice "Chips" Robinson</b>	Greymouth Harrier Club, Rotary Club of Greymouth, Greymouth Jockey Club and West Coast Basketball Association
<b>Ken Smythe</b>	West Coast Lawn Bowls and Cobden Bowling Club
<b>Judy Tutcheon</b>	C.A.R.E. and other West Coast Health Groups
<b>Leonie &amp; Barry Uddstrom</b>	Greymouth SPCA

## ITO GRADUATIONS

Congratulations to the 19 graduates from Industry Training Organisations who attended a ceremony at Council in September to celebrate completing their qualification.

A huge well done to the 88 students who have graduated in the past year and to their employers and their families for supporting them.



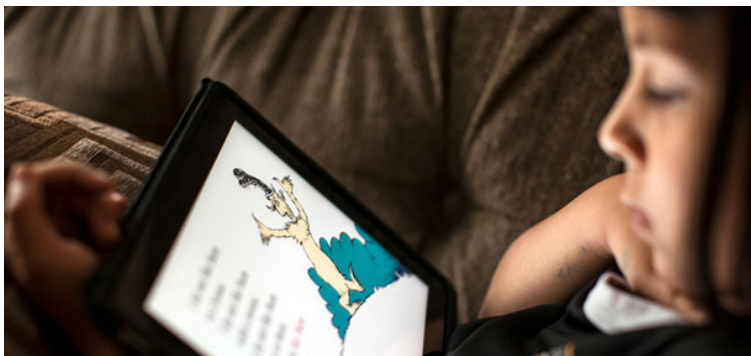
## SUMMER READING CHALLENGE

The Summer Reading Challenge is a very cool programme developed for school children and participating in it is easy. Kids just have to read every day or almost every day - they can read anything as long as it is text. Young children may be read to by someone else.

Everyone who enters goes in to win some pretty cool prizes. Prizes in past years have included brand new bikes, super cool Samsung tablets, Aquatic Centre family passes, fishing rods, books and heaps more!

The Summer Reading Challenge helps to maintain school children's reading levels over the summer by encouraging daily reading. Research has shown that school children's reading levels drop during the summer and the Grey District Library and local schools want to do everything possible to prevent that.

Encourage your school children to take part in the programme and have fun with reading. Look for entry forms at your school or the Grey District Library later this month.



Council manages or contributes to several Facebook pages, including:

<b>Grey District Council</b>	<i>GreyDC</i>
<b>Aquatic Centre</b>	<i>GreymouthAquaticCentre</i>
<b>Grey District Library</b>	<i>GreyDistrictLibrary</i>
<b>What's On Greymouth</b>	<i>WhatsOnGreymouth</i>
<b>The Real Stories</b>	<i>TheRealStoriesGreyDistrict</i>
<b>Heart of the West Coast</b>	<i>theheartofthewestcoast</i>



We use the **Grey District Council** page to share success stories and news about the District as well as share important notices such as water breaks, water shutdowns, severe weather events and road closures etc. At the moment we have over 1,800 likes but are always looking for more!

Please LIKE our page and feel free to share relevant posts with your friends and family. It's an easy way to spread messages quickly and keep our community informed.

## 2015 CHRISTMAS PARADE - SAVE THE DATE!

The management team at the Regent Greymouth are excited to be hosting the

### Grey District Christmas Parade at 11.30am on Saturday 5 December 2015

Jacinda McBride said the theatre is a big part of the community and it was a logical decision to get in behind the event. "We love entertaining kids here at the Regent so it made sense to get involved".

This year there are 120 free sponsored movie tickets up for grabs at a float parade prize giving afterwards at the Regent to encourage schools, churches, community and sporting groups to get behind this year's event.

**Come along and enjoy the carnival-like atmosphere, which will be set up at the roundabout with food and craft stalls and watch the exhibition at the skatepark from some of the country's leading skateboarders.**

"The skatepark is another major asset for the town and we are working closely with the guys across the road to bring some real talent to town," Jacinda said.

Forms to register your floats can be collected from the Regent Greymouth on Mackay Street. Stalls for the day must be registered - email [manager@regentgreymouth.co.nz](mailto:manager@regentgreymouth.co.nz).

