

## Customer-focused Council



Council has started a programme of work that aims to put the customer at the centre of everything we do and prepare the organisation to face Government-led changes across the sector.

The Customer-focused Council (CfC) programme responds to a recent organisational review that highlights some key issues.

The CfC programme will take a hard look at how we work, learn from our

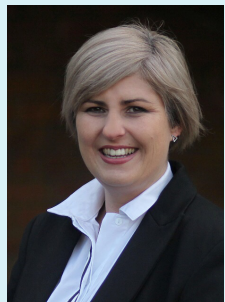
experience and expertise and recommend what's needed to get us ready for the future. The process is about setting the Grey District Council up to deliver for our customers and community. Grey District Mayor Tania Gibson says "the elected Council is very supportive of the programme to bring a stronger customer focus right across the organisation and prepare for the future.

"Our Council and our staff

are here for the people of the Grey District. We all want to deliver good customer service and be ready to make the most of the sector changes ahead for our community.

"I'm really keen to see a programme of improvements that help support the organisation to do their jobs as best they can for the community and we're pleased to see work underway."

## Mayor's comment



It has been a busy time for Council finalising the Grey District Council's Long Term Plan (LTP). It was great getting out and visiting our communities and gathering feedback. I would like to thank all of you who made the effort to come and discuss and be informed on the issues facing your Council and communities and the reasons why the questions were being raised. Thank you as well to Staff and Councillors who put significant time into this LTP. Believe me, it was not easy and some decisions we would rather not have had to make.

There have been good outcomes on the Spring Creek Pool and we are working through the options to keep this running into the future with Council funding and the generous sponsorship offer that has been received. A massive thank you to the donor, who will be revealed in due course. Unfortunately, we could not justify the continuation of the Runanga Service Centre and we are working with members of the Runanga Community to try and keep some services running in another location, with Council support.

Extending the rubbish and recycling to outlying communities was the easiest decision, with this being one of the most common requests to Council. It is easier, tidier and has long term benefits for recycling and for the environment.

The new library had many misconceptions. It is not proposed until Year Five of the Long

Term Plan which means it must go through another Long Term Plan in three years, but by having a plan in place if funding options arise such as Provincial Growth Fund or Shovel Ready we can apply in the hope of securing funds. There appeared to be an assumption that the library would not be in the CBD because use of freehold land is proposed but Council is committed to the CBD and there are land options available. Another misconception was that people do not read books anymore however in today's world libraries are also community hubs, used for various activities including running courses for the elderly, school holiday programmes, tourists use the facilities etc. Our library is not up to the standard it should be now and with the speed that technology moves, where will it be in five years? We have researched other areas that have recently or are in the process of establishing new libraries and they have not looked back. We will research further and also visit some of these facilities over the next three years.

There are many Government policy changes you as the ratepayer are facing. Significant Natural Areas (SNAs) is one, where the Government wants Councils to map and work with landowners to identify these areas on private land - work that the ratepayer will have to pay for. The Tai Poutini One District Plan Committee is doing a lot of work around this and there is much tension around having to implement this on landowners and our ratepayers. There has been a lot of media around this issue and for now, the process has been halted - but it will be back. Our landowners cannot afford to have potential productive land locked-up and our ratepayers simply cannot afford the costs and rate rises associated with this, so please write to

your local MP's to make your voices heard.

As I write this, I have just heard news of the new tax on non-electric vehicles to subsidise the uptake on electric vehicles. We live in a rural area that covers vast areas and there are no alternatives to current vehicles for our farmers, primary industry and tradies. This recommendation from the Climate Change Commission has serious implications for West Coast industry and lifestyle.

The Government are well advanced on their proposed Water Reforms which potentially will see Council water assets (water, sewer and stormwater) transferred from Council (ratepayer ownership) into a larger regional entity, likely to include most of the South Island. We still lack specific information from the Government, but the estimates again are that smaller rural communities will be the ones paying the most. At present, the Government have not presented a compelling case for change and for this to work it will require all the metropolitan areas to join to help subsidise the smaller schemes. We will update you as we get information but please make your voices heard to your local MPs on this issue also.

On a brighter note, the Grey District's Mayors Taskforce for Jobs has currently helped facilitate and support 92 new positions since August 2020. In recognition, we have been selected as a finalist for a Local Government NZ Excellence Award in the Economic Well Being category. Thanks to our employers and to our Coordinator Marina Tomasi-Atkinson for working with me on this project and the awesome results achieved.

*Tania Gibson  
Mayor*

## Digital literacy classes

The Libraries Stepping UP digital literacy classes are extremely popular and best of all, they're free and open to people of all ages. Here is the schedule for Term 3:

DATE	TIME	TOPIC
Thursday 5 August	2pm - 4pm	Smartphones
Thursday 12 August	2pm - 4pm	Excel
Saturday 14 August	10am - 12pm	Smartphones
Thursday 19 August	2pm - 4pm	Email 1 - Setting up a Gmail account
Thursday 26 August	2pm - 4pm	Google Drive
Saturday 28 August	10am - 12pm	Computer basics
Thursday 2 September	2pm - 4pm	Smartphones
Thursday 9 September	2pm - 4pm	Internet safety and security
Saturday 11 September	10am - 12pm	Facebook
Thursday 16 September	2pm - 4pm	Computer basics
Thursday 23 September	2pm - 4pm	Google and the internet

All classes are held in the West Coast Room at the Grey District Library.

Classes are open to all ages and registering is easy - either phone the Library on 03 768 5597 or go to <https://2020.arlo.co/upcoming-courses> and select 'West Coast Region'. You need to register for each class you wish to attend. For further information about the Stepping Up programme, please visit <http://steppingup.nz/>.

**Library Goes Fines-Free for Children from 1 July 2021** - The Library is joining a growing number of New Zealand and international libraries removing overdue fines for children and young adults. Manager Library & Museum Services, Liz Burke says "We want to remove as many barriers as possible to children reading and improving their literacy skills. Doing away with fines on children's and young adult library cards is a major step forward. We're also aware many families are stretched at this time, especially with the economic uncertainty associated with the COVID-19 pandemic. We hope this policy change encourages families to get library membership cards for children and young adults so they can access the many free books and online resources available".

## Community funding



West Coast Amateur Sports Trust

### Contestable Grants Fund

The Contestable Grants Fund is a new fund introduced by the Council to assist in the vision of becoming a thriving, connected and resilient Grey District. Applications are called for each year in July/August. The grant applications will need to align with Council's vision and outcomes to be a Thriving, Connected and Resilient Grey District. There has been \$25,000 allocated from Council for this fund.

### Other funding

The following funding schemes are available to groups in our community and funding rounds for all schemes open in September and March/April each year.

#### Creative Communities Scheme -

Funding for arts and cultural projects that increase participation in arts and benefit local communities. Recent recipients include Grey District Youth Trust, Greymouth Competitions Society and Ochre Project Team.

#### Sport New Zealand Rural Travel Fund -

Grey District school and sport club teams can apply for Sport NZ Rural Travel funding. Applications are open to rural sports clubs and rural schools teams with young people aged between 5 – 19 years who require subsidies to help with transport expenses to local sporting competitions. Recent recipients include Greymouth Hockey Club, Greymouth Marist Rugby Club, John Paul 2 High School, Marist Rugby League Juniors, Paroa Junior Soccer Club, Waro-Rakau Rugby League.



#### West Coast Amateur Sports Trust -

This fund assists sports people in the Buller, Grey, and Westland districts who have been recognised by their sports body to have the potential to reach national representative level. The monies granted help our talented youth to participate in training and/or competition that will help them towards reaching a goal in line with the Trust's objectives.

The full criteria for each scheme can be found on our website and application forms will be available online or at Council offices when funding rounds are open, [www.greycdc.govt.nz/funding](http://www.greycdc.govt.nz/funding). For more information please call 03 769 8600.

## Community halls benefit from PGF fund

The Grey District Council was successful in securing funding to enable the renovations and upgrading of War Memorials, Community Halls and Community Facilities within the Grey District.

An application to the Provincial Growth Fund (PGF) for \$1,039,627 has paved a way forward for these activities with the dual aim of job creation for local businesses and contractors, as well as assisting with upgrades for some of the district's community facilities.

We have been able to include 16 projects across the Grey District, which includes improvements to the following Grey District facilities: The Greymouth Regent Theatre, The Cobden Breakwater Kahuna Boardriders Clubroom, Nelson Creek Community Hall, Ahaura Memorial Hall, Totara Flat Hall, Moonlight Hall, Rotomanu Hall, Blackball Workingmens Club Community Hall, Moana Community Hall, Barrytown Settlers Hall, The Greymouth Cenotaph, Dixon Park Memorial Gates, Blackball Community Centre, Dobson Hall, Kaiata Community Hall and Camerons Community Hall.

Projects have been progressing well; see an image of the Greymouth Cenotaph below. The memorial received new kerbing completed by Greymouth contractor BD Solutions and Coast Electrics kindly donated their time to install speakers inside the area which will benefit all future ceremonies held at the Cenotaph. Works are due to be completed by the end of July.



# Getting Prepared for your Pets



In the event of an emergency what will happen with your pets?

If you have pets, domestic animals, or livestock you need to include them in your emergency plan.

Just like you and your family, your pets need food, water, and shelter at the very least.

Consider having two emergency kits - one for at home and a 'go kit' to take if you have to leave quickly. Make sure that everyone in your house knows where the kits are. You might even let a neighbour know, just in case you are not able to get home.

Remember to check your pet kit regularly for anything that needs adding or changing. Keep an eye on expiry dates, especially for any medication. Change the water every six months to keep it fresh.



If it isn't safe for you,  
it isn't safe for your animals!



## Get prepared for your pet - Checklist

To help you to ensure you are prepared the West Coast Emergency Management Group have put together a handy checklist for you to follow. To download a copy of the checklist please visit: [www.greycdc.govt.nz/beprepared](http://www.greycdc.govt.nz/beprepared). Alternatively, you can collect a copy of the pamphlet from Council offices.

If you have any questions, please contact:

Mike McEnaney  
Grey District Civil Defence Emergency Management Officer  
[mike.mcenaney@werc.govt.nz](mailto:mike.mcenaney@werc.govt.nz)  
027 450 0131

or

Matt Beavon  
Readiness and Response Manager  
[matt.beavon@werc.govt.nz](mailto:matt.beavon@werc.govt.nz)  
021 646 614



[www.westcoastemergency.govt.nz](http://www.westcoastemergency.govt.nz)

*Heart of the West Coast*



# THE WESTLAND RECREATION CENTRE IS TURNING 5!

## SATURDAY 21 AUGUST 2021 ALL DAY ACTIVITIES, WITH SOMETHING FOR THE WHOLE FAMILY!

**GOLD COIN  
ENTRY FOR  
WHOLE  
FACILITY**  
*(excludes donut  
workshop)*

Keep an eye on our Facebook page  
or website for more details coming soon.  
[www.facebook.com/WestlandRec](http://www.facebook.com/WestlandRec)



## Stay up to date with Council news

You can stay up to date with all Council news on our website or Facebook page, which are updated regularly.

You can also find details of issues Council is currently consulting on and how you can have your say.

If you've got a question or some feedback for us, please feel free to use the easy online contact form on our website - we're here to help.

 [www.greydc.govt.nz](http://www.greydc.govt.nz)

 [www.facebook.com/GreyDC](http://www.facebook.com/GreyDC)

## Plumbing fitting precaution

Some plumbing fittings have the potential to allow minute traces of metals to accumulate in water standing in the fittings for several hours.

Although the health risk is small, the Ministry of Health (MoH) recommends that you flush a mug full of water from your drinking-water tap each morning before use to remove any metals that may have dissolved from the plumbing fittings.

The MoH recommend this simple precaution for all households, including those on public and private water supplies. It is important to note that heavy metals are not a problem with the water itself but rather, when plumb-solvent water dissolves heavy metals found in household plumbing fittings.

If any residents would like further information, they can contact either the Community & Public Health office on 768 1160 or the Infrastructure Services Department of the Grey District Council on 769 8611.

## What to do if you find illegally dumped rubbish

If you come across illegally dumped rubbish around the district you can contact Council who will investigate the rubbish and try to identify the offender. Offenders who are caught will be ordered to remove the rubbish and may be issued with a fine of up to \$400. Serious offenders may also be prosecuted under the Litter Act 1979 with a maximum penalty of \$30,000.

### Why is illegal dumping a problem?

- Dumped waste can be dangerous to people, particularly when it includes hazardous waste like sharp objects and asbestos.
- Removing illegally dumped waste costs a lot of money.
- Dumped materials can harm the local environment by killing birds and fish, damaging plants, soil and waterways.

## B.I.T of Grey Newsletter



### Building Industry Talk of Grey

Council has a new digital newsletter out called the Building Industry Talk of Grey (BIT of Grey). You can sign up to receive this newsletter by emailing: [communications@greydc.govt.nz](mailto:communications@greydc.govt.nz)